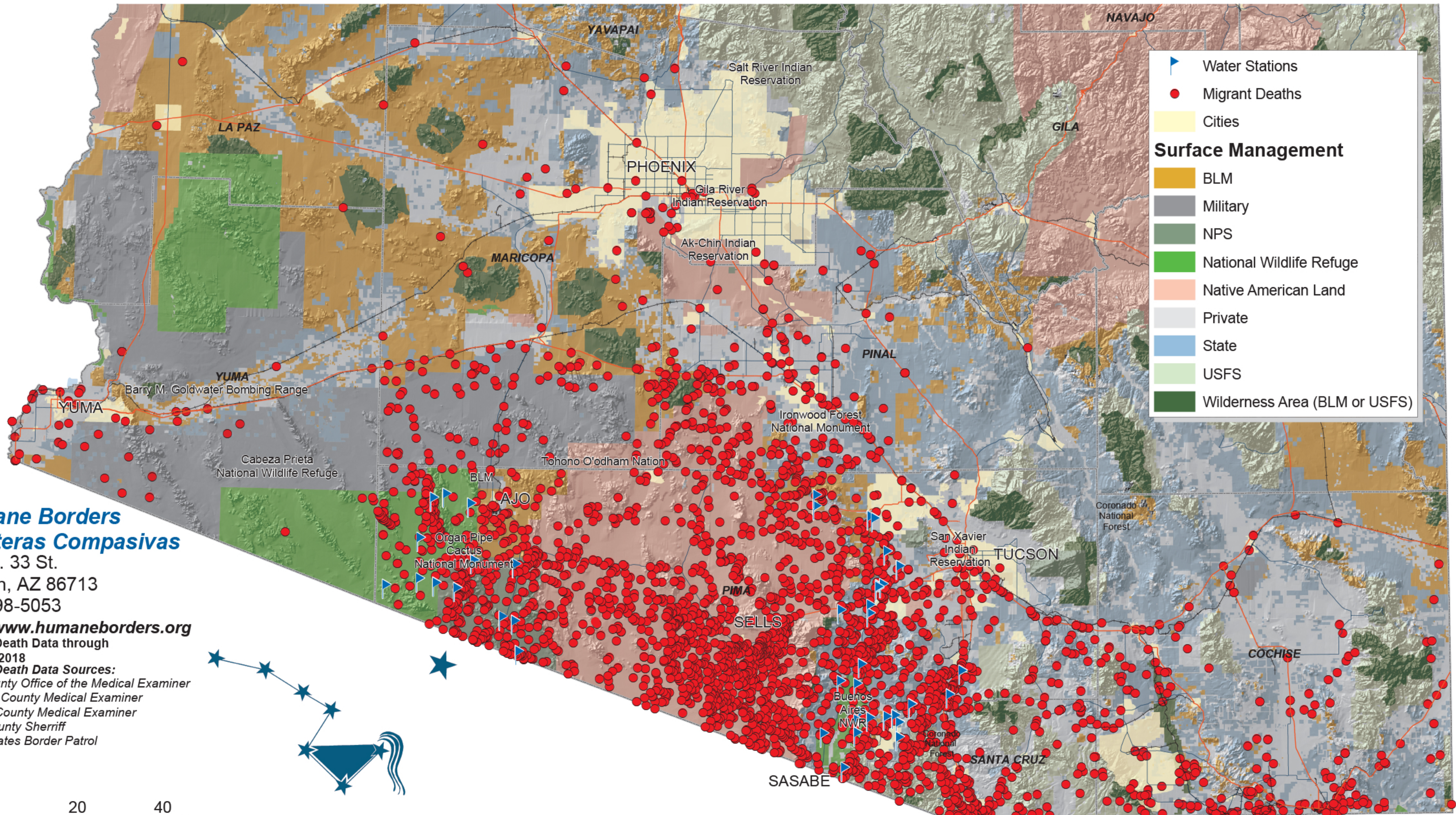


# 1999 - 2018 RECORDED MIGRANT DEATHS AND HUMANE BORDERS WATER STATIONS



- Water Stations
- Migrant Deaths
- Cities

**Surface Management**

- BLM
- Military
- NPS
- National Wildlife Refuge
- Native American Land
- Private
- State
- USFS
- Wilderness Area (BLM or USFS)

## Humane Borders Fronteras Compasivas

243 W. 33 St.  
Tucson, AZ 86713  
520-398-5053

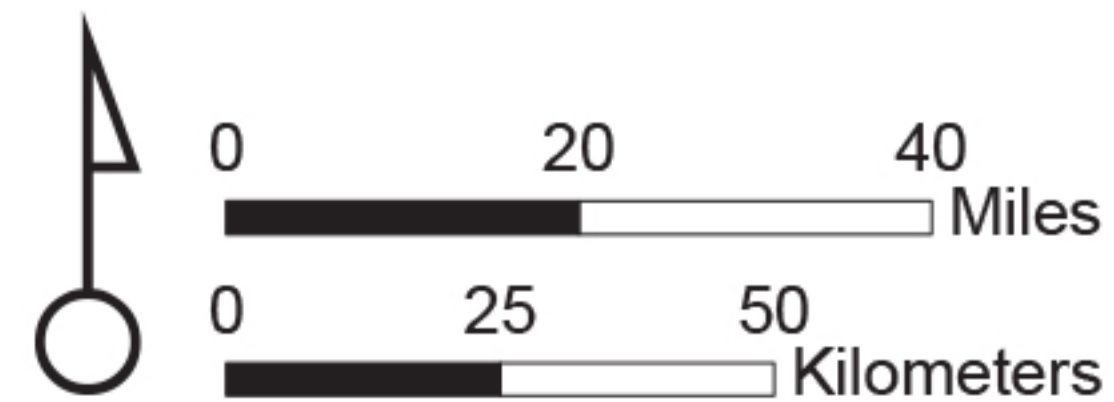
<http://www.humaneborders.org>

Migrant Death Data through

April 30, 2018

### Migrant Death Data Sources:

- Pima County Office of the Medical Examiner
- Maricopa County Medical Examiner
- Cochise County Medical Examiner
- Yuma County Sherriff
- United States Border Patrol



Humane Borders has collected data on 3,244 migrant deaths occurring between October, 1999 and April 30, 2018. This map shows those that can be located in space. Some dots represent more than one death.

*Over the past 18 years, Humane Borders has deployed equipment for over 80 water stations at remote, strategic locations in Mexico and the USA.*